

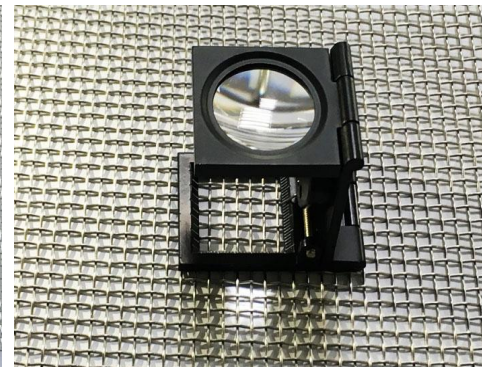
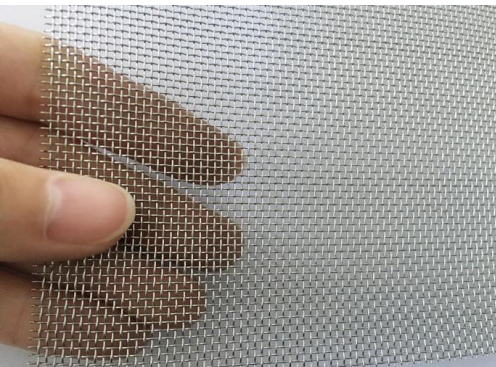
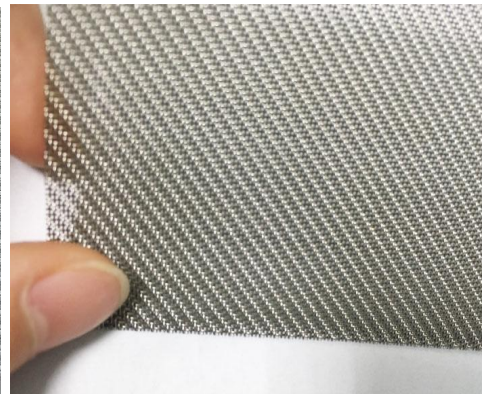
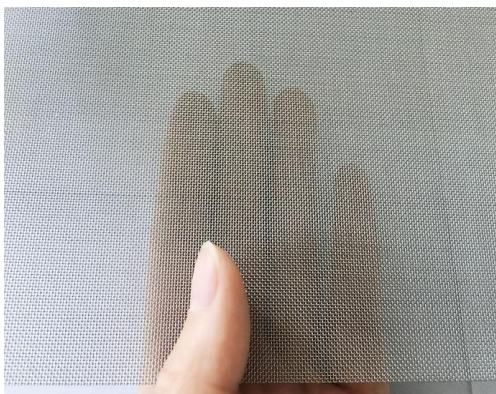
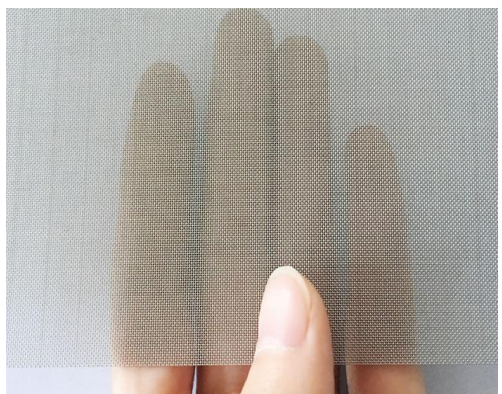
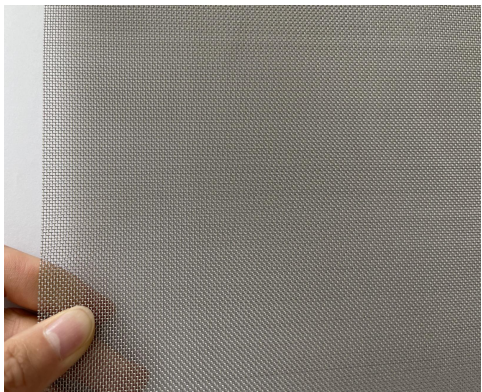
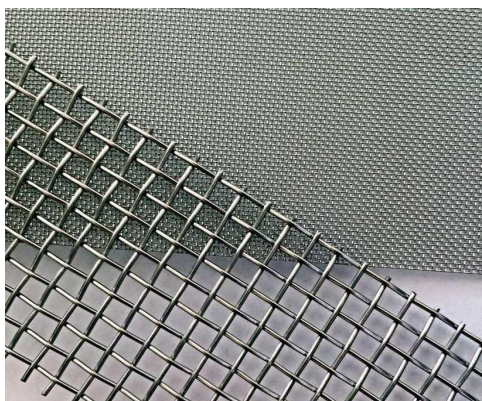
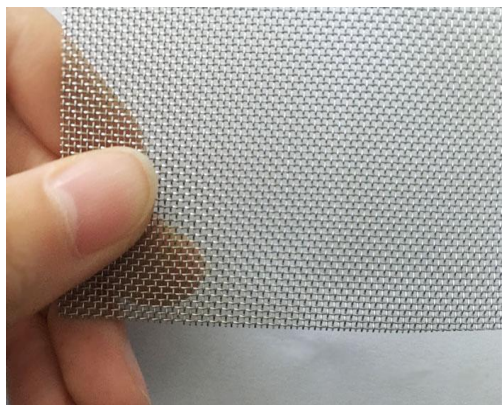
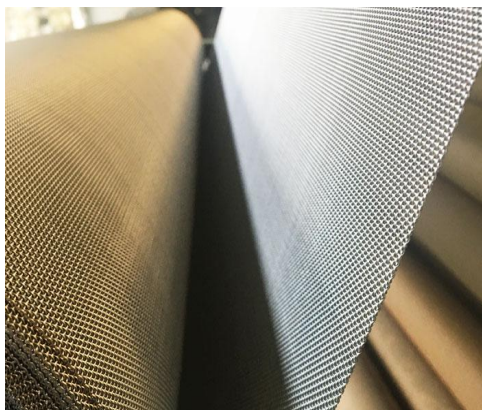
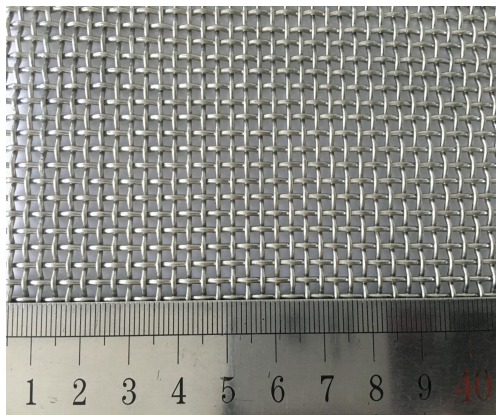
Stainless steel square mesh with opening size from 300 microns to 25mm.

The wire mesh was made according to the technical requirements ISO 9044 and ASTM E2016.

The materials of the wires for mesh are conforming to the requirements ASTM A580.

Mesh No.	Wire Diameter		Opening Size		Open Area	Weave Type	Roll Width Max
	inch	mm	inch	mm	%		mm
1×1	0.1575	4.000	0.8425	21.400	71.0	Plain	2000
2×2	0.0984	2.500	0.4016	10.200	64.5	Plain	2000
3×3	0.0787	2.000	0.2546	6.467	58.3	Plain	2000
4×4	0.0630	1.600	0.1870	4.750	56.0	Plain	2000
4×4	0.0472	1.200	0.2028	5.150	65.8	Plain	2000
5×5	0.0394	1.000	0.1606	4.080	64.5	Plain	2000
6×6	0.0472	1.200	0.1194	3.033	51.3	Plain	2000
6×6	0.0350	0.890	0.1316	3.343	62.4	Plain	2000
8×8	0.0280	0.710	0.0970	2.465	60.3	Plain	2000
10×10	0.0252	0.640	0.0748	1.900	56.0	Plain	2000
10×10	0.0201	0.510	0.0799	2.030	63.9	Plain	2000
12×12	0.0230	0.584	0.0603	1.533	52.4	Plain	2000
12×12	0.0200	0.508	0.0633	1.609	57.8	Plain	2000
14×14	0.0118	0.300	0.0715	1.817	73.7	Plain	2000
14×14	0.0180	0.457	0.0534	1.357	56.0	Plain	2000
14×14	0.0200	0.508	0.0514	1.306	51.8	Plain	2000
16×16	0.0098	0.250	0.0616	1.564	74.3	Plain	2000
16×16	0.0126	0.320	0.0588	1.494	67.8	Plain	2000
16×16	0.0180	0.457	0.0445	1.131	50.7	Plain	2000
17×17	0.0126	0.320	0.0499	1.268	63.7	Plain	2000
18×18	0.0160	0.406	0.0428	1.088	53.0	Plain	2000
20×20	0.0197	0.500	0.0359	0.911	41.7	Plain	2000
20×20	0.0160	0.406	0.0340	0.864	46.3	Plain	2000
23×23	0.0126	0.320	0.0374	0.950	56.0	Plain	2000
24×24	0.0140	0.356	0.0360	0.914	51.8	Plain	2000
25×25	0.0126	0.320	0.0309	0.784	50.4	Plain	2000
30×30	0.0177	0.450	0.0240	0.608	33.0	Twill	2000
30×30	0.0118	0.300	0.0215	0.547	41.7	Plain	2000
30×30	0.0065	0.165	0.0268	0.682	64.8	Plain	2000
35×35	0.0177	0.450	0.0156	0.397	21.9	Plain	1300
35×35	0.0126	0.320	0.0160	0.406	31.3	Plain	2000
35×35	0.0100	0.254	0.0186	0.472	42.3	Plain	2000
40×40	0.0071	0.180	0.0215	0.546	56.5	Plain	2000
40×40	0.0100	0.254	0.0186	0.472	42.3	Plain	2000
50×50	0.0090	0.229	0.0160	0.406	40.9	Plain	2000
50×50	0.0080	0.203	0.0120	0.305	36.0	Plain	2000
54x54	0.0063	0.160	0.0137	0.348	46.9	Plain	2000
60×60	0.0055	0.140	0.0145	0.368	52.5	Plain	2000
60×60	0.0063	0.160	0.0122	0.310	43.5	Plain	2000
60×60	0.0075	0.191	0.0091	0.232	30.1	Plain	2000
60×60	0.0070	0.178	0.0097	0.245	33.6	Plain	2000

DA SHANG WIRE MESH
053600 No.13 Hongqi West Street, Anping, Hebei, China.



Any interest, please feel free to contact us!
Dashang Wire Mesh
Email: sales@dashangmesh.com
Tel/Fax: 0086 318 7563319/7521333
Pho: 0086 18632807688
Industrial Woven Wire Mesh Solution!

